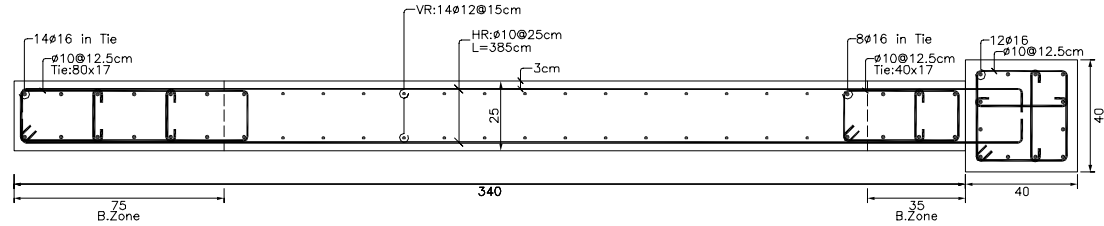
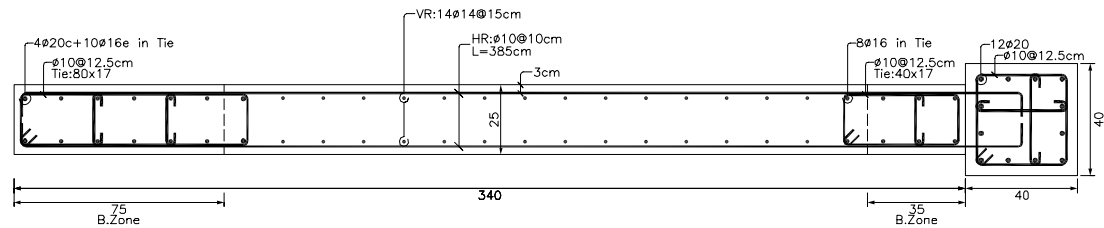


ELEVATION OF SHEAR WALL 8



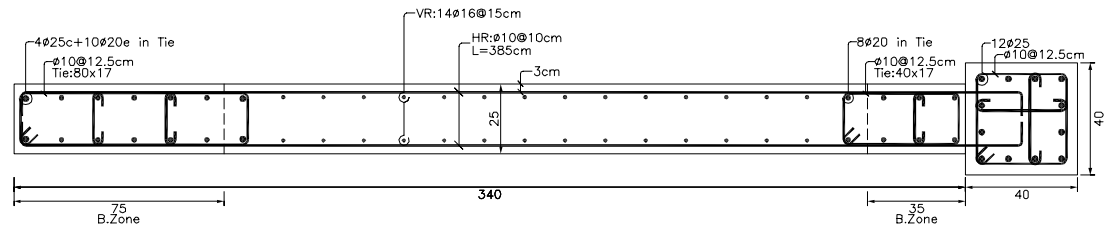
SHEAR WALL 8 : SECTION C-C

Use double hook tiepin ϕ 10@80cm as mesh spacer in length of wall.
 VR: Vertical Reinforcement, HR: Horizontal Reinforcement
 B.Zone: Boundary Zone



SHEAR WALL 8 : SECTION B-B

Use double hook tiepin ϕ 10@80cm as mesh spacer in length of wall.
 VR: Vertical Reinforcement, HR: Horizontal Reinforcement
 B.Zone: Boundary Zone



SHEAR WALL 8 : SECTION A-A

Use double hook tiepin ϕ 10@80cm as mesh spacer in length of wall.
 VR: Vertical Reinforcement, HR: Horizontal Reinforcement
 B.Zone: Boundary Zone